

Confirming the device registration of COOLPIX990/880 (Windows XP Home Edition/Professional)

The following explanation uses COOLPIX990 as an example.

Install Nikon View 5 (device driver) and restart your computer.

After the restart, connect your camera to the computer using a USB cable and turn on the camera. The camera is registered automatically.



When the camera is not registered automatically...

If the computer fails to register the camera automatically, a message instructing you to insert the OS disk will appear. Insert the Windows XP CD into the CD-ROM drive and click **OK**. When you click OK, a warning dialog may appear on screen. Click **Continue Anyway** to install the device drivers.

Log on

You will need to log on as Computer Administrator to register the camera.

Before connecting the camera to the computer

Be sure to install Nikon View 5 (device driver) before connecting your camera to the computer.

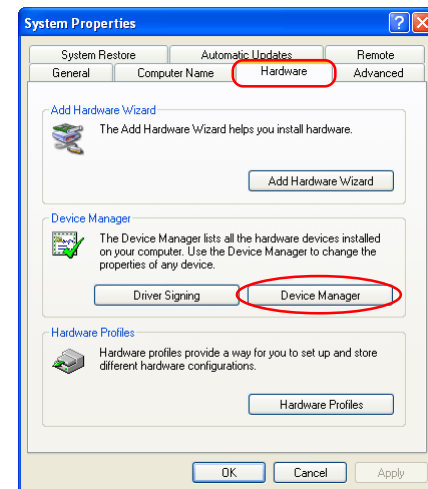
Follow the instructions below to check that the camera has been correctly registered with the system.

Step 1

Select **Control Panel** from the **Start** menu to open the **Control Panel** window.

Click the **Performance and Maintenance** icon inside the **Control Panel** window to open the **Performance and Maintenance** window.

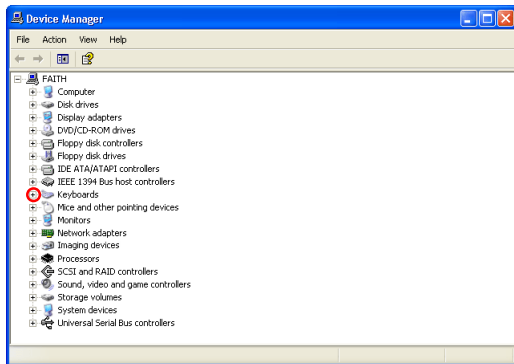
Click the **System** icon inside the **Performance and Maintenance** window to open the **System Properties** window.



Open the **Hardware** tab and click the **Device Manager** button in the **Device Manager** area.

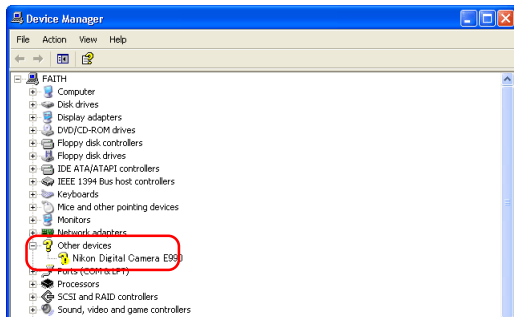
Step 2

Confirm that **Imaging devices** is listed in the **Device Manager** dialog box, then click the plus sign (+) next to **Imaging devices**.



If Imaging Device does not appear

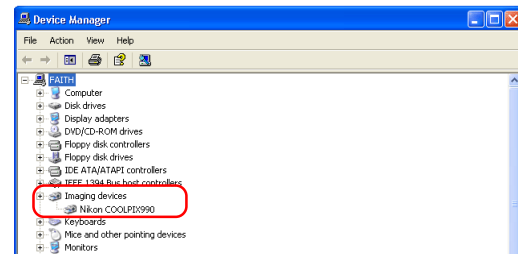
If **Nikon Digital Camera E990** is listed under **Other devices**, click [here](#) .



If **Imaging devices** is not listed in the **Device Manager** and **Nikon Digital Camera E990** is not listed under **Other devices**, disconnect the camera, and restart the computer. When the computer has restarted, reconnect the camera to the computer.

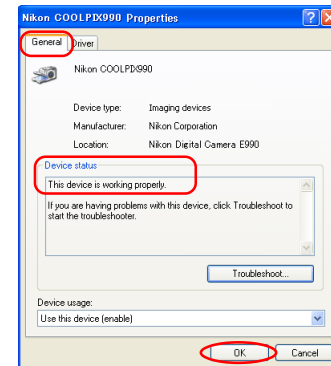
Step 3

After confirming that **NikonCOOLPIX990** is listed under **Imaging devices**, double-click the listing to open the **Properties** window.



Step 4

Click the **General** tab in the **Nikon COOLPIX990 Properties** dialog box and confirm that **This device is working properly** appears under **Device status**. Click **OK**.



Click **OK** to close the **System Properties** dialog box.

